

Grace Episcopal Church

Our Grateful Response to God's
Grace

The 3 G's:

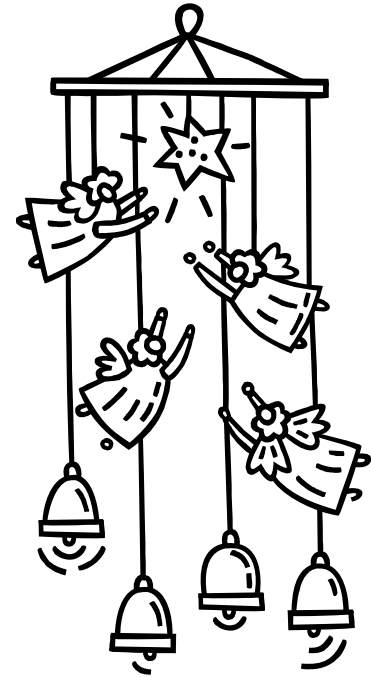
Giving



Grace



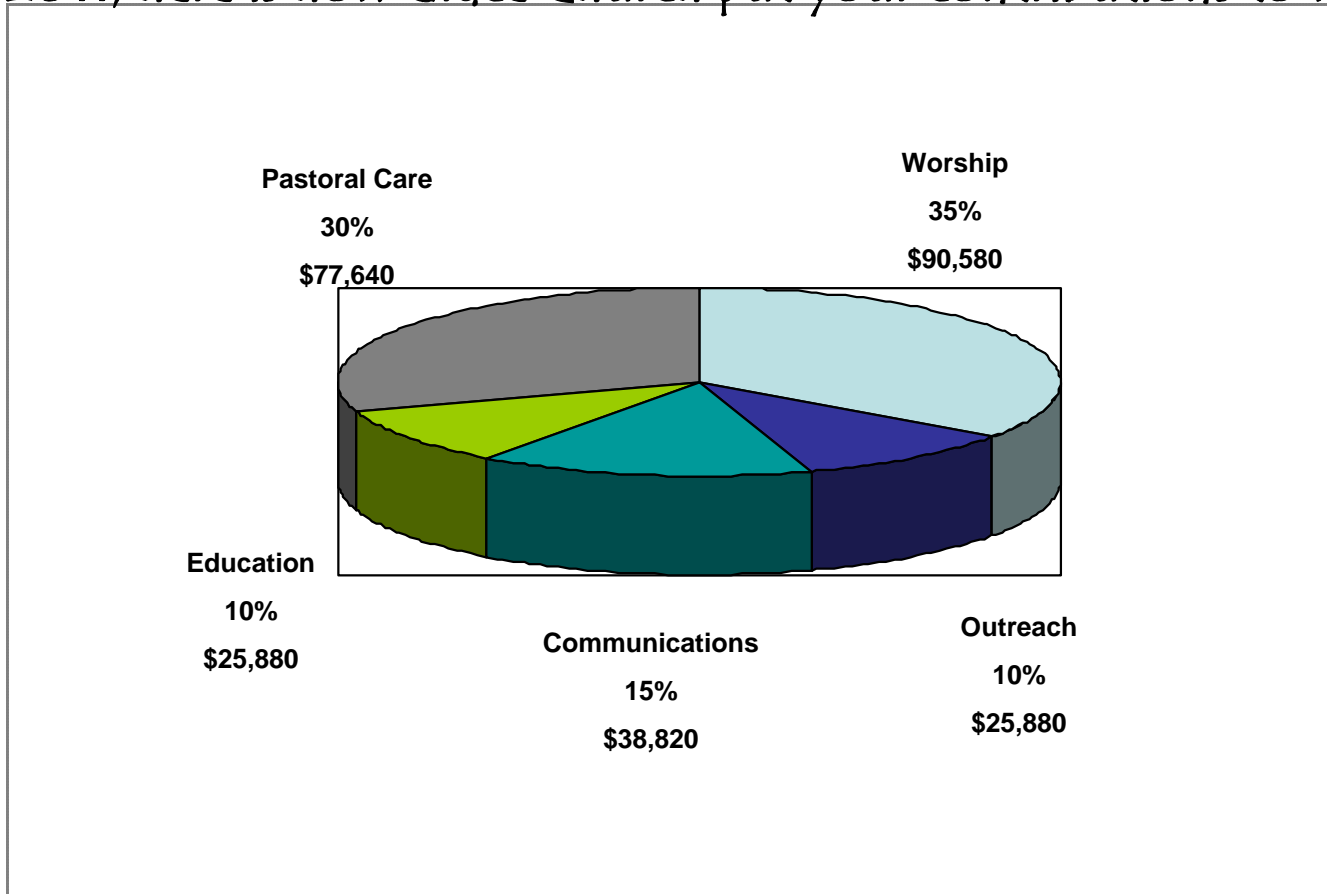
GratITUDE



Grace-ful Gratitude and Giving

Grace Episcopal Church is a place where the Holy Spirit is alive and well, working through and among us to accomplish God's incredible vision. Our ministries are thriving and we have an incredible facility. This booklet is intended to convey a real picture of what we are doing through the generosity of our members.

In 2011, here is how Grace Church put your contributions to work !



A letter from your Rector

My dear parish family,

The last four sermons preached here at Grace Church have been on the topics of gratitude, prayer, faith, and discipleship. The overarching theme, of course, has been faithful stewardship of all that we have and all that we are. What place in my life does God and his Church hold? Where am I on my pilgrimage in faith? If my Church's mission is "to know Christ and make Christ known to others," *what do I do to assist my parish in accomplishing that mission?*

I asked everyone in the parish to spend this week in prayer for Grace Church, that we may be what God calls us to be and do what God would have us do. I announced that we would receive cards to complete which would indicate our financial commitment to Grace Church in the coming year. To use a familiar biblical phrase, "the time is at hand" for us to move forward in faith into the life that we have been called to live.

A quick look at St. Luke's gospel (Luke 12:34) is a good starting point for us as we fill out those cards. The New International Version (NIV) says, "**Wherever your treasure is, there the desires of your heart will also be.**" The Contemporary English Version (CEV) says, "**Your heart will always be where your treasure is.**" And the New Revised Standard Version (NRSV) says, "**For where your treasure is, there your heart will be also.**" Perhaps the version (a paraphrase) found in The Message is clearest of all: "**It's obvious, isn't it? The place where your treasure is, is the place you will most want to be, and end up being.**"

This Sunday is designated "**Celebration of Life in Christ**" to conclude our annual emphasis for this budget year on stewardship as an ongoing spiritual practice, as a way of life for Christians. Please consider your treasure and your heart as we move forward at Grace Church.

Faithfully yours,
(The Rev.) Kenneth L. Armstrong

Worship

The most significant part of our ministry funding goes toward worship.....It's more than just Sunday morning.



- Oblationers
- Ushers
- Evensong

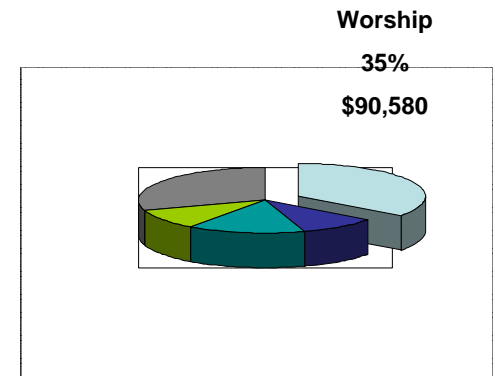
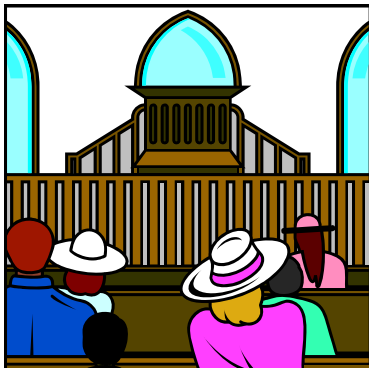
- Celebration of Holy Days
- Blessing of the Animals
- Weddings
- Funerals

- Acolytes, Crucifers and Thurifers
- Lay Readers
- Bishop Visitation
- Wednesday morning Eucharist

- Baptisms
- Nursery Attendant
- Visitor and member-friendly bulletins

- Childrens' vocal choir
- Adult vocal choir
- Adult bell choir

- Mass on the Grass
- Tulsa Boy Singers



Christian Education

•Education for Ministry

•Inquirers' Class

•Cursillo

•Sunday School for
Children and Adults

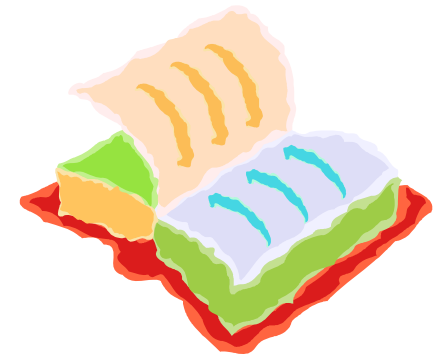
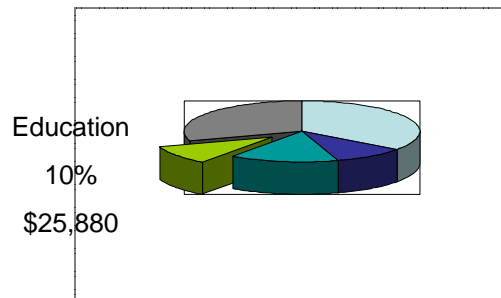
•First Communion Class

•Lenten study

•Epiphany Pageant

•St Crispin's summer camp

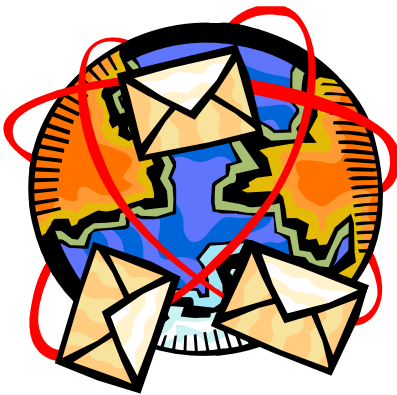
•Instructed Eucharist



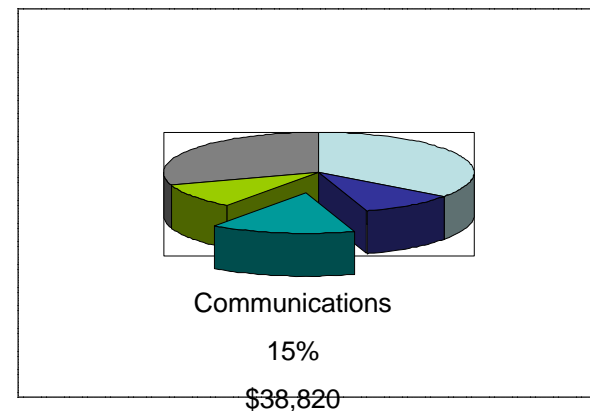
Communication

Good communications are critically important to the life of our parish and account for 15% of our total operating expenses.

As the generational make-up of our congregation continues to become more diverse, it is vital to communicate in a variety of ways. The challenges of our mobile, busy, often-time over-extended lifestyles requires that the church do everything in its power to keep people up-to-date with parish activities and ways in which people can participate in the life of the parish.

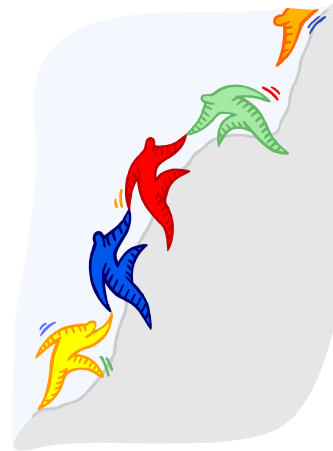
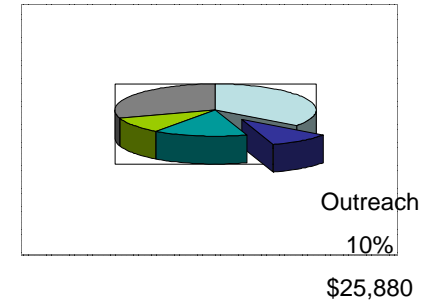


- Website
- Newsletter
- Sunday bulletin
- Text-blasts
- Phone tree



Outreach

- Trinity Dental Clinic
- Friendship Feast
- CASONO
- Food pantry
- Christmas caroling
- Shrove Tuesday Pancake supper
- Soup and Stations
- Greeters
- Neighborhood playground



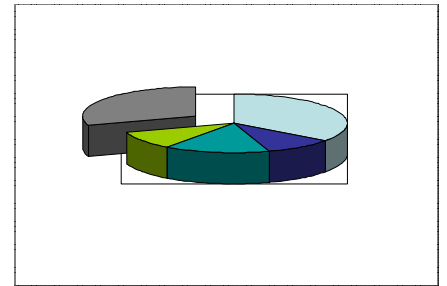
Whatever you do, work at it with all your heart... it is the Lord Christ you are serving." Colossians 3:23-24

Pastoral Care

Taking care of those in need is one of our most important activities.. From taking Holy Communion to our shut-ins, to providing prayer support and counseling to those who are ill, or in crisis, our ongoing care exemplifies our Christian community.

Pastoral Care is not just the responsibility of the clergy -- it's every Christian's privilege.

Pastoral
Care
30%
\$77,640



- *Premarital counseling*
- *Family counseling*
- *LEVs*
- *Bereavement counseling*
- *Funeral planning*
- *Baptism*
- *Confirmation*
- *Prayer list each Sunday*
- *Hospital and home visitations*

*And whatsoever ye do in word or deed,
do all in the name of the Lord Jesus,
giving thanks to God and the Father by him.*

Ministries & activities supported by specific contributions or memorial --- not with money from pledges

- Daughters of the King
- Altar Guild
- Episcopal Youth Churchmen
- Semi –annual Rummage sale
- Episcopal Church Women
- Annual bake sale
- Camperships
- Marland Children’s Home
- Opportunity Center 2nd grade class
- Salvation Army Angel tree
- Discretionary funds
- Facility improvements
- Major facility repairs
- BARHD in Uganda
- Diocese of Jerusalem



Stewardship is about Growth through Giving.

Find the level of Giving that brings you JOY.



What is **God** inspiring Grace Church to do and to be?

Worship, education, communication, outreach, pastoral care

(fill in the blanks and turn in to the Office – you’ll hear more about this later.)

- _____
- _____
- _____
- _____
- _____

Include your name if you would like to be contacted about your comments.